

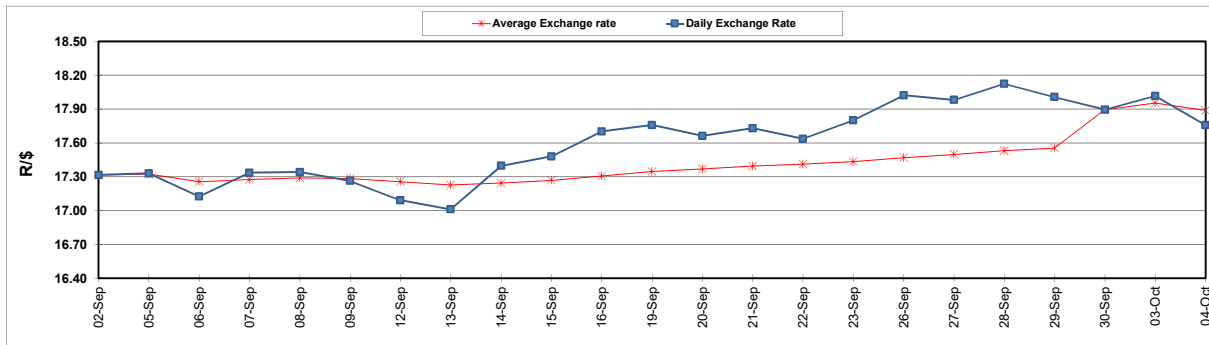
	PETROL 95 ULP	PETROL 93 ULP & LRP	DIESEL 0.05%	DIESEL 0.005%	ILL. PAR.
GAUTENG PUMP PRICE (SA c/l) AS FROM 05/10/2022	2,236.000	2,206.000	-	-	-
WHOLESALE PRICE (SA c/l) AS FROM 05/10/2022	-	-	2,406.100	2,430.500	1,699.288
SINGLE NATIONAL MAXIMUM RETAIL PRICE	-	-	-	-	2,240.000
BASIC FUEL PRICE - 04/10/2022 (SA c/l)	1,172.144	1,146.681	1,578.977	1,599.240	1,443.859
PRESS RELEASE CONTRIBUTION TO BFP 30/09/2022 - 04/10/2022 (SA c/l)	1,247.750	1,204.750	1,513.630	1,533.030	1,542.128
UNIT OVER/(UNDER) RECOVERY - 04/10/2022 (SA c/l)	75.606	58.069	(65.347)	(66.210)	98.269
AVERAGE BASIC FUEL PRICE 30/09/2022 - 04/10/2022	1,177.515	1,151.876	1,539.640	1,558.925	1,431.896
AVERAGE UNIT OVER/(UNDER) RECOVERY 30/09/2022 - 04/10/2022	70.235	52.874	(26.010)	(25.895)	110.232

ANALYSIS MOVEMENT OF AVERAGE OVER/(UNDER) RECOVERY

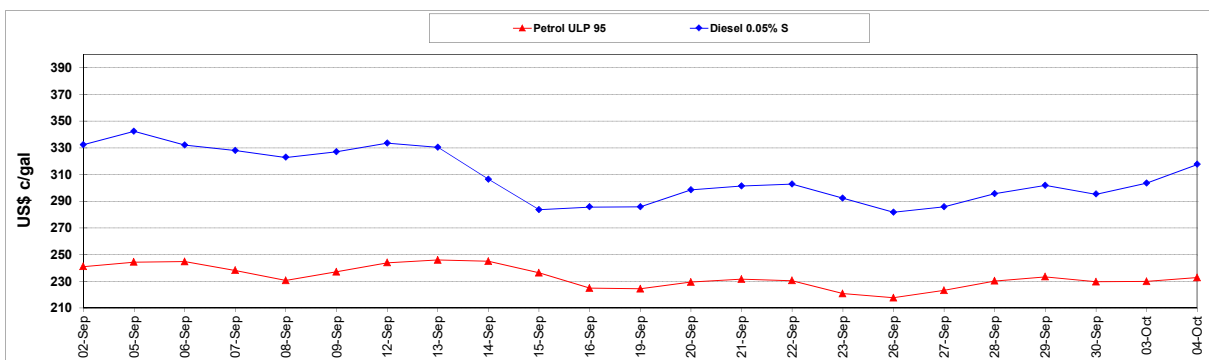
	PETROL 95	PETROL 93	DIESEL 0.05%	DIESEL 0.005%	ILL. PAR.
- MOVEMENT IN INTERNATIONAL PRODUCT PRICES	62.520	45.327	(36.097)	(36.109)	100.851
- MOVEMENT IN EXCHANGE RATE	7.715	7.547	10.087	10.214	9.381
AVERAGE UNIT OVER/(UNDER) RECOVERY 30/09/2022 - 04/10/2022	70.235	52.874	(26.010)	(25.895)	110.232

R/\$ EXCHANGE RATE - (R/\$17.7573 - 04/10/2022)

EXCHANGE RATE USED IN BASIC FUEL PRICE



INTERNATIONAL PRODUCT PRICES OF BASKET USED IN BASIC FUEL PRICE



BASIC FUEL PRICE IN SA CENTS PER LITRE

